

Vilna

Welcome

Welcome to our community. We hope the information contained within this profile is useful. If additional information is required, please contact our representative from the "Key Contacts" section.

Area Overview

The Village of Vilna is a thriving community located in the Lakeland tourism district. The local economy is vibrant and varied, including peat processing, tourism, forestry, and steel fabrication. In addition, efficient highway and rail connections, as well as numerous trucking firms, bus and courier services ensure that Vilna is well-connected to local, regional and national markets.

Downtown Vilna is the site of the world's largest mushroom, a 20 foot high, 15 foot diameter giant replica of tricholoma uspale mushroom, a traditional ingredient in the ethnic dishes of the region.

Location

The Village of Vilna is located in the County of Smoky Lake, in east-central Alberta. It is located approximately 1 1/2 hour's drive from Edmonton's city limits [157 km] to the southwest; and 45 minutes from the Town of Vegreville to the south; the Town of St. Paul to the east and the Town of Lac La Biche to the northeast.

Economic Base

The economic base of Vilna is agriculture and natural resources.

The agricultural industry benefits from a variety of agricultural resources including low cost grazing lands to the north, good quality, flat crop lands to the west; a climate suitable for most crops and ready access to processing facilities, and a large domestic market about 1 1/2 hours away in Edmonton.

Primary natural resources in the area are large deposits of natural gas, extensive areas of peat, and some forested areas suitable for logging.

Economic Facts

A major industry in the nearby rural area is a peat processing plant which harvests, dries and ships peat to Edmonton for containerization and distribution. Large areas of undeveloped peat lands are located in the regions to the north and east of the Town of Smoky Lake.

Steel fabrication is a minor industry in the town and surrounding area. There are a number of highly qualified and innovative welders undertaking custom steel fabrication and manufacturing of recreation equipment such as campground stoves, steel framed picnic tables, and agricultural implements such as manure spreaders, bale loader/carriers, ground rollers and specialty trailers.

Tourism is regarded as a significant growth industry for the Village and surrounding areas. There are numerous small business enterprises starting to evolve as rapidly changing economic factors encourage the large Edmonton market to look closer to home for vacation and recreation opportunities. The area is viewed as having significant potential for eco-tourism oriented ventures.

In the year 2000, the Village of Vilna was awarded participation to the Alberta Main Street Programme through the Alberta Historical Resources Foundation.

Since its creation in 1987, the Alberta Main Street Programme has been a catalyst for downtown revitalization and community economic development initiatives through the historic restoration of Alberta's Main Streets. The program's objective is to help selected communities capitalize on their heritage resources as a source of pride, a business opportunity and a mechanism to increase tourism.

The emphasis of the Vilna Main Street Project is primarily on the successful implementation of the Four Point Approach - organization, design, marketing and economic development. Thus, the focus falls initially on the design component and subsequent architectural rehabilitation and restoration of Vilna's commercial buildings. Yet, interdependently, the health of the business district is also a large determining factor in Vilna's downtown revitalization. Organization, marketing and economic development are therefore equally important to Vilna's well-structured approach to improving both the physical appearance and economic conditions of the community.

Fundamentally, downtown revitalization breathes new life into a community. The Vilna Main Street Project process generates excitement and optimism for the future and encourages the community to reevaluate its direction and find, once again, its own unique identity that made the community a special place to begin with.

Major Businesses Products/Services

N/A N/A

Financial Institutions

Toronto Dominion Bank - Agency
Alberta Treasury Branch - Agency

Utilities

Electrical Power

ATCO Electric Ltd.
Box 2426
Edmonton, Alberta
T5J 2V6

www.atco.com

Tel: 800-668-2248

Standard Residential Service [1100]
Customer Charge: \$16.10
Energy Charge: All energy 7.48/kW.h

Natural Gas

County of Smoky Lake Natural Gas System
Box 310

Smoky Lake, Alberta
T0A 3C0
Tel: 780-656-3730

Residential Rates - \$10.00 monthly service fee
- \$7.27/g'j usage

Telephone

Telus Communications Inc.

www.telus.com

Tel: [toll free] 800-361-3311

Water Supply

Residential water rates are \$18.00 per month for base of 13 cubic meters and \$0.75 charged for every cubic meter above the base. The commercial rate is charged by the Village depending on the type of business.

Waste Management

Residential sewage rates are \$7.50 per month. The commercial rate is a flat rate that is charged by the Village depending on the type of business.

Garbage is picked up weekly. Residential garbage/landfill charge is set at \$7.50 per month. The commercial rate is set at \$10.00 per month.

Taxation

	<u>Residential/Farmland</u>	<u>Non-Residential</u>
2004		
Municipal Tax Rate	24.7000	28.4800
Education - Alberta School Foundation Fund Tax Rate	5.0900	7.6500
Seniors Lodge Accommodation Tax Rate	.5900	.5900

Mill Rates [2000]

Residential - Public 28.0
Residential - Separate N/A
Non-Residential - Public 33.5
Non-Residential - Separate N/A

Transportation

Air Services

An all-weather airport is located about a 1/2 hour drive to the east beside the Town of St. Paul. To the west, a grass air strip is located beside the Town of Smoky Lake. It is maintained for casual summer use. National and international air service is available through the Edmonton Industrial Airport in downtown Edmonton and the Edmonton International Airport.

Highways

Connecting highways include Highway 28, leading west to Edmonton and east to Bonnyville [via Highway 28A], and Secondary Road 859, leading south to Hamlin. Highway 28 is the main highway connecting Edmonton with the Lakeland tourism region and the Cold Lake military air base.

Secondary Highway 855 provides access southward via Highways 45 and 16 to the Yellowhead Route to the more eastern provinces and to the south and east sectors of the province. A network of highways connects through to Lethbridge and Medicine Hat and the U.S. border bypassing the major population centres of Edmonton and Calgary.

Highway 36, about 10 minutes west of the Village of Vilna, provides direct paved access to Lac La Biche and to Fort McMurray and the Athabasca Tar Sands developments.

Highways 855, 45, 15 and 21 provide paved access to the Edmonton International Airport, 1 1/2 hours distance, avoiding the congestion of Edmonton city traffic.

A network of primary and secondary highways serve into the Vilna region providing access to the western regions of the province and the Peace River country, preventing the need to deal with the restrictions of traffic in a large population centre.

Trucking Firms

Several trucking firms serve Vilna and region, providing general and specialized transportation services, including livestock hauling.

Bus Services

Greyhound Bus Lines operates a twice daily passenger and courier service between Vilna and Edmonton and Vilna and Cold Lake. In addition, Carson tours operates a luxury bus charter service from the area.

Courier and Taxis

Loomis and Purolator supply daily service to Vilna. Greyhound Bus Lines also offers twice daily courier service and Canada Post offers daily courier service. There is no taxi service in Vilna.

Community Lifestyle

Recreation

Recreation facilities include a 9 nine hole golf club(which is currently developing grass greens), cultural centre and hall, arena with artificial ice, senior drop-in centre with 2 lane bowling facilities, playgrounds, Bonnie Lake baseball diamond and the Bonnie Lake Campground.

Community Organizations

Recreational and cultural organizations include the Vilna & District Agricultural Society, Vilna Main Street Project Society, Fish & Game, Minor Hockey Club, Old Timers Hockey Club, Figure Skating Club, 4-H Club, Church Clubs, Vilna Soccer Club, Vilna Veselka Dance Club.

Religious Services

Sacred Heart Catholic Church
Vilna Greek Orthodox Church
Ruthenian Greek Catholic Church
Pentecostal Church
United Church

Special Annual Events/Attractions

Downtown Vilna is the site of the world's largest mushroom, a 20 foot high, 15 foot diameter giant replica of tricholoma uspale mushroom, a traditional ingredient in the ethnic dishes of the region.

Vilna holds an authentic, early 1920's pool hall. The Vilna Pool Hall is Alberta's oldest operating pool hall and barbershop. The Vilna Pool Hall and Barbershop features 4 old-time tables, a Booker coal heater, oiled wood floors and an antique barber chair. The Vilna Pool Hall and Barbershop was awarded Historical Designation by the Alberta Historical Resource Foundation in June 2000. Phone 780-636-3666 for more information.

Vilna's Annual Fall Fair is held annually the third weekend in August. The Vilna and District Agricultural Society provides entertainment all day Saturday at the Arena facilities for children and adults of all ages to enjoy. On Sunday, the Village of Vilna hosts a Pancake Breakfast and in the afternoon offers a picnic in the park with activities for the family.

Hospitality

Accommodation

Vilna Hotel
Countrylane Bed & Breakfast
Inn at the Ranch
Kittiwake Retreat
Spedden Inn
Kalna Cottages

Restaurants

Side Street Cafe
Spedden Inn
Family Corner

Education

Vilna is part of the Aspen View Regional School Division #19, headquartered in Athabasca [Tel: 780-675-2273].

Daycare/Nursery

N/A

Public

Vilna School provides education for Grades K to 12.

Separate

N/A

Private

N/A

Post Secondary Education

Post-secondary programs and courses are available in St. Paul through the St. Paul campus of Lakeland College. Other programs available in St. Paul include Alberta Vocational College and Blue Quills First Nations College.

Health Care

Our Lady's Health Care Centre is located in Vilna which houses medical clinics and diagnostic services 5 days a week. There is also a senior citizens' lodge and self-contained units available for seniors. Senior citizen housing is also available in Smoky Lake. Home care health and support services are available.

Emergency Services

Fire Protection

Vilna is served by a volunteer fire department, 3 fire trucks and an emergency rescue van [Tel: 780-636-3511 or 911].

Police Services

Vilna is served by the Smoky Lake detachment of the Royal Canadian Mounted Police [RCMP] [Tel: 780-656-3691 or 911].

Ambulance Services

Paramedic and ambulance service is available [Tel: 780-656-3030 or 911].

Community Services

Municipal

Village of Vilna
Box 10
Vilna, Alberta
T0A 3L0
Tel: 780-636-3620

Vilna Municipal Library

Provincial

N/A

Federal

Canada Post Office

Key Contacts for Business Development

Municipal

Village of Vilna
Box 10
Vilna, Alberta
T0A 3L0

Tel: 780-636-3620
Fax: 780-636-3620
vilna@mcsnet.ca

Carol Trider
Mayor

Twila Petrushka
Administrator

Reach Corporation
Box 310
Smoky Lake, Alberta
T0A 3C0
Tel: 780-656-2110
Fax: 780-656-2106

Provincial (Updated December 2004)

[Alberta Economic Development](#)

Box 412
Room 308, Provincial Building
5025 - 49 Avenue
St. Paul, Alberta
T0A 3A4
Tel: 780-645-6358
Fax: 780-645-6241
[Garry Krause](#), Regional Manager
[Maryann Robinson](#), Client Service Representative

Ray Danyluk
Member of the Legislative Assembly (MLA)
Lac La Biche - St. Paul Constituency

Constituency Office
P.O. Box 1848; #108, 5002-48 Street
St. Paul, AB
T0A 3A0
Phone: (780) 645-6999
Fax: (780) 645-5787
laclabiche.stpaul@assembly.ab.ca

Legislature Office
#319, 10800-97 Avenue
Edmonton, AB
T5K - 2B6
Phone: (780) 415-9578
Fax: (780) 422-1671

Federal (Updated June 2004)

Dave Chatters
Member of Parliament [MP]
Westlock-St. Paul Constituency
House of Commons
Ottawa, Ontario

K1A 0A6

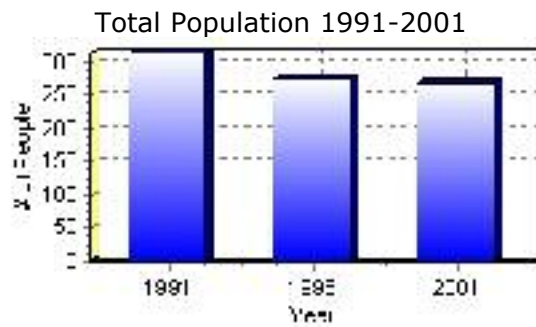
Constituency Office:

To be established soon. In the meantime, call 1-800-667-8450.

Population

Total Population	
Population 2004*	269
Population 2003*	269
Population 2002*	269
Population 2001**	270
Population 2000*	302
Population 1996**	274
Population 1991**	314
Population % change 1991-1996	-14.60%
Population % change 1996-2001	-1.86%

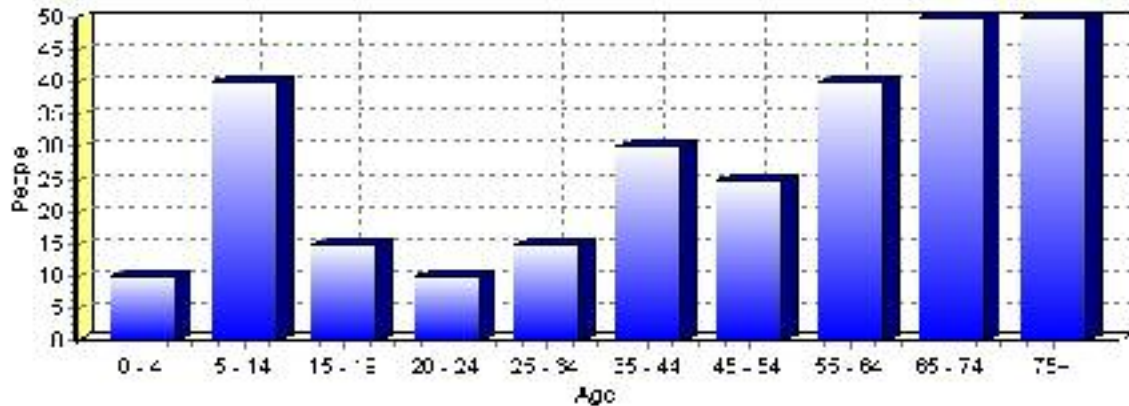
* Source: Official Population List, Alberta Municipal Affairs
 ** Source: Statistics Canada 1991, 1996, & 2001 Census



Population by Age and Gender	1996 Male	1996 Female	1996 Total	2001 Male	2001 Female	2001 Total
Age 0 - 4	10	5	15	5	5	10
Age 5 - 14	10	10	20	20	20	40
Age 15 - 19	5	0	5	5	10	15
Age 20 - 24	10	5	15	5	5	10
Age 25 - 34	15	15	30	5	10	15
Age 35 - 44	5	15	20	15	15	30
Age 45 - 54	10	20	30	10	15	25
Age 55 - 64	20	10	30	15	25	40
Age 65 - 74	25	35	60	30	20	50
Age 75 and older	30	25	55	15	35	50
Total All Persons	150	125	275	135	140	275

Source: Statistics Canada 1996 & 2001 Census (numbers may not add up due to rounding)

Vilna Population by Age Group (2001)

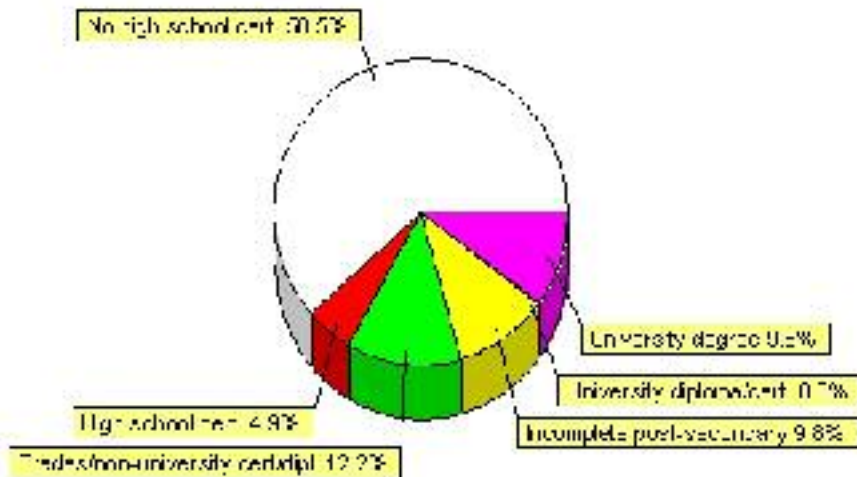


Education

Highest level of schooling for Population 20yrs and older	2001	%
People without high school certificates	120	58.54%
People with high school certificates	10	4.88%
People with trades or non-university certificate or diploma	25	12.20%
People with post-secondary education (not completed)	20	9.76%
People with university diploma/certificate	0	0.00%
People with university degree	20	9.76%
Total Population 20 years and older	205	100.00%

Source: Statistics Canada 2001 Census (numbers may not add up due to rounding)

Vilna Highest Level of Schooling 2001



Population with Post Secondary Qualifications	1996	%	2001	%
Agriculture and biological sciences	10	20.00%	0	0.00%
Commerce, management and business administration	20	40.00%	0	0.00%
Educational, recreational and counseling services	10	20.00%	20	36.36%
Engineering and applied science tech. and trades	15	30.00%	15	27.27%
Engineering and applied sciences	0	0.00%	0	0.00%
Fine and applied arts	0	0.00%	10	18.18%
Health professionals, science and technologies	0	0.00%	0	0.00%
Humanities and related fields	10	20.00%	0	0.00%
Mathematics and physical sciences	0	0.00%	0	0.00%
Social sciences and related fields	0	0.00%	0	0.00%
Other and/or no specialization	0	0.00%	0	0.00%
Total people with post secondary qualifications	50	100.00%	55	100.00%
Females with post-secondary qualifications	25	50.00%	20	36.36%
Males with post-secondary qualifications	25	50.00%	35	63.64%

Source: Statistics Canada 1996 & 2001 Census (numbers may not add up due to rounding)

Labour Force

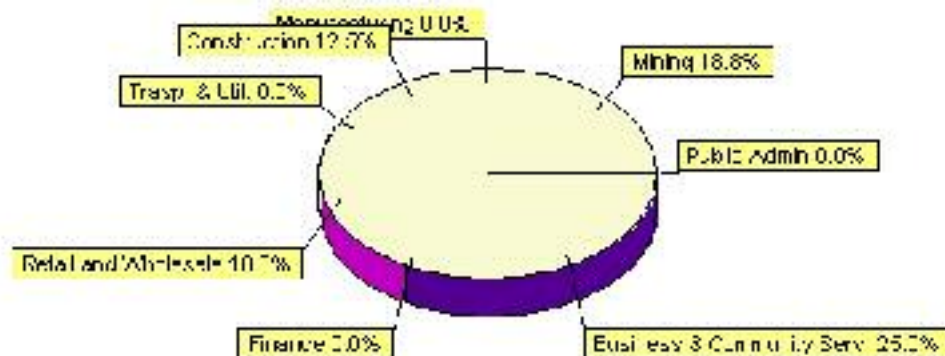
Labour force by activity	1996	2001
In the labour force, both sexes	110	85
Not in the labour force, both sexes	100	135
Total population 15 and over	215	220
Employed, both sexes	110	75
Unemployed, both sexes	0	10
Participation rate, both sexes	51.00%	60.00%
Unemployment rate, both sexes	0.00%	0.00%

Source: Statistics Canada 1996 & 2001 Census (numbers may not add up due to rounding)

Labour Force by Industry Division	1996	% of total	2001	% of total
Agriculture	25	22.73%	0	0.00%
Mining	15	13.64%	15	18.75%
Manufacturing	0	0.00%	0	0.00%
Construction	10	9.09%	10	12.50%
Transportation. & Utilities	10	9.09%	0	0.00%
Retail and Wholesale	10	9.09%	15	18.75%
Finance	0	0.00%	0	0.00%
Business & Community Services	45	40.91%	20	25.00%
Public Administration	10	9.09%	0	0.00%
Total All Industries	110	100.00%	80	100.00%

Source: Statistics Canada 1996 & 2001 Census (numbers may not add up due to rounding)

Vilna Labour Force By Industry - 2001



Labour Force by Major Occupational Groups	1996	%	2001	%
Management occupations	10	9.09%	10	13.33%
Business, Finances and administrative occupations	25	22.73%	0	0.00%
Natural and applied sciences and related occupations	0	0.00%	0	0.00%
Health occupations	0	0.00%	0	0.00%
Occupations in social science; education; government and religion	10	9.09%	15	20.00%
Occupations in art; culture; recreation and sport	0	0.00%	0	0.00%
Sales and service occupations	20	18.18%	15	20.00%
Trades; transport; equipment operators and related occupations	35	31.82%	15	20.00%
Occupations unique to primary industry	15	13.64%	10	13.33%
Occupations unique to processing; manufacturing and utilities	0	0.00%	0	0.00%
Occupations not elsewhere classified	0	0.00%	10	13.33%
Total - All Occupations (major groups)	110	100.00%	75	100.00%
Females - All Occupations	50	45.45%	35	46.67%
Males - All Occupations	60	54.55%	35	46.67%

Source: Statistics Canada 1996 & 2001 Census (numbers may not add up due to rounding)

Income

Family Income (Number of Families)	1996	%	2001	%
less than \$19,999	0	0.00%	20	44.44%
\$20,000 - \$39,999	0	0.00%	25	55.56%
\$40,000 - \$59,999	0	0.00%	20	44.44%
\$60,000 and over	0	0.00%	0	0.00%
Total number of families	0	0.00%	65	144.44%
Average family income	\$0		\$39,793	
Median family income	\$0		\$36,491	

Source: Statistics Canada 1996 & 2001 Census (numbers may not add up due to rounding)

Household Income (Number of Households)	1996	%	2001	%
less than \$19,999	0	0.00%	75	57.69%
\$20,000 - \$39,999	0	0.00%	30	23.08%
\$40,000 - \$59,999	0	0.00%	15	11.54%
\$60,000 and over	0	0.00%	0	0.00%
Total number of households	0	0.00%	130	100.00%
Average household income	\$0		\$27,896	
Median household income	\$0		\$17,219	

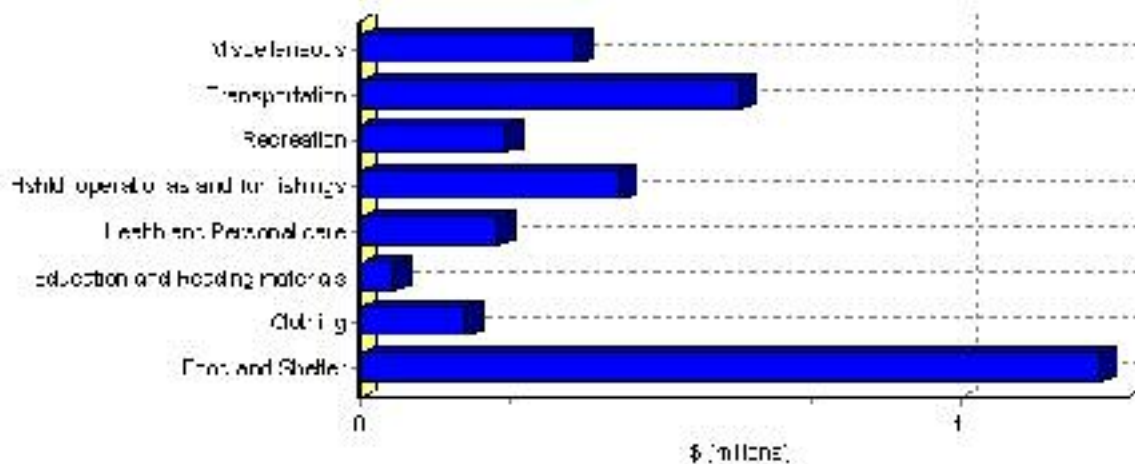
Source: Statistics Canada 1996 & 2001 Census (numbers may not add up due to rounding)

Family Expenditure

Expenditure Category	1992	% of total	1996	% of total
Food and Shelter	\$1,356,375	38.57%	\$1,233,479	36.62%
Clothing	\$228,665	6.50%	\$178,142	5.29%
Education and Reading materials	\$68,705	1.95%	\$56,394	1.67%
Health and Personal care	\$221,075	6.29%	\$228,998	6.80%
Hshld. operationas and furnishings	\$386,930	11.00%	\$434,737	12.91%
Recreation	\$273,335	7.77%	\$241,902	7.18%
Transportation	\$705,995	20.07%	\$632,971	18.79%
Miscellaneous	\$273,250	7.77%	\$361,570	10.73%
Total Current Consumption	\$3,516,975	100.00%	\$3,368,193	100.00%
Total # of Households	140		138	
Average Consumption per Household	\$25,121		\$24,407	

Source: Statistics Canada Family Expenditure Survey 1992 & 1996 (numbers may not add up due to rounding).

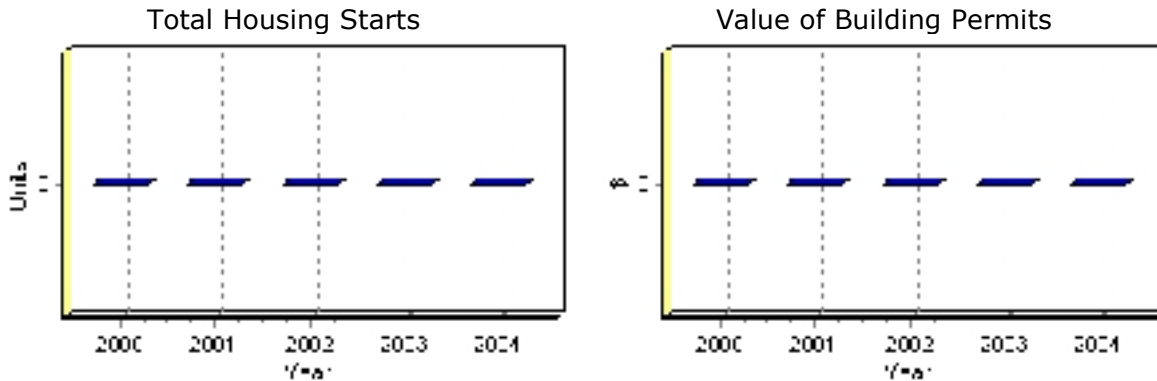
Vilna Family Expenditures (1996)



Building Permits

Total Building Permit Values	2000	2001	2002	2003	2004
Building Permits Value, Commercial	\$0	\$0	\$0	\$0	\$0
Building Permits Value, Industrial	\$0	\$0	\$0	\$0	\$0
Building Permits Value, Institutional	\$0	\$0	\$0	\$0	\$0
Building Permits Value, Residential	\$0	\$0	\$0	\$0	\$0
Building Permits Value, Total	\$0	\$0	\$0	\$0	\$0
Total Housing Starts	0	0	0	0	0

Source: Statistics Canada 2000-2004 Building Permits (numbers may not add up due to rounding)



Dwellings

Occupied Private Dwellings by Type	1996	% of total	2001	% of total
Apartments	0	0.00%	0	0.00%
Detached Duplexes	0	0.00%	0	0.00%
Movable Dwellings	25	17.86%	0	0.00%
Other single attached house	0	0.00%	5	3.70%
Row and semi-detached house	0	0.00%	15	11.11%
Single-detached house	105	75.00%	115	85.19%
Total number of occupied private dwellings	140	100.00%	135	100.00%
Private dwellings, owned	95	67.86%	95	70.37%
Private Dwellings, rented	40	28.57%	40	29.63%

Source: Statistics Canada 1996 & 2001 Census (numbers may not add up due to rounding)

Private Dwellings by Period of Construction	# of Dwellings	% of total
Period of construction, before 1946	30	21.43%
Period of construction, 1946 - 1960	10	7.14%
Period of construction, 1961 - 1970	35	25.00%
Period of construction, 1971 - 1980	25	17.86%
Period of construction, 1981 - 1990	25	17.86%
Period of construction, 1991 - 2001	15	10.71%
Total number of private dwellings constructed	140	100.00%

Source: Statistics Canada 2001 Census (numbers may not add up due to rounding)

Disclaimer: Information in this profile has been provided from a variety of external sources. Although every effort has been made to ensure the accuracy, currency and reliability of the content and data, AlbertaFirst.com Ltd. accepts no responsibility in this regard.

© AlbertaFirst.com Ltd., 2005.